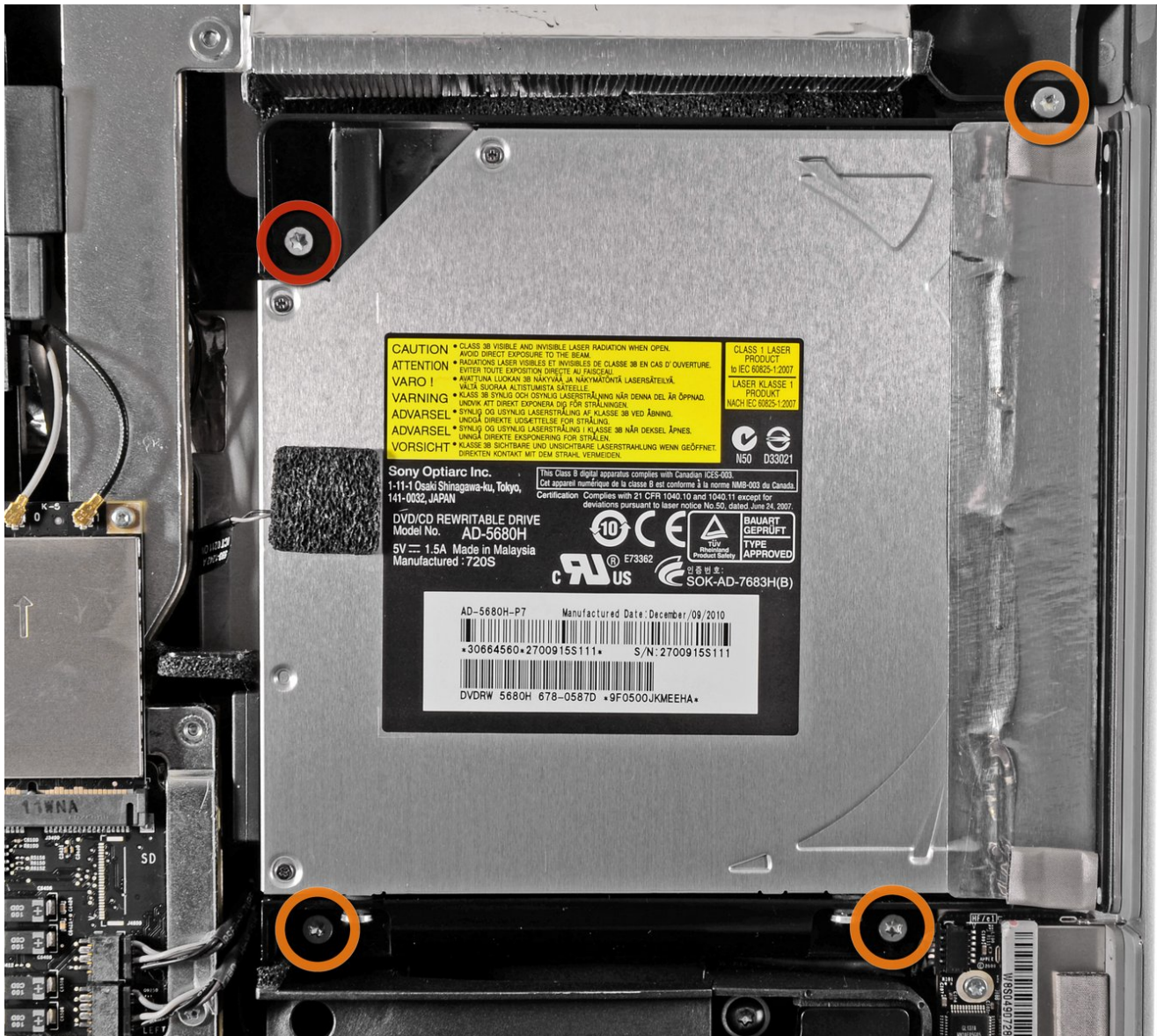




# iMac Intel 21.5" EMC 2389 Optical Drive Replacement

Internal Prerequisite.

Written By: Andrew Bookholt



---

# INTRODUCTION

Internal Prerequisite.



## TOOLS:

- [T10 Torx Screwdriver](#) (1)
-

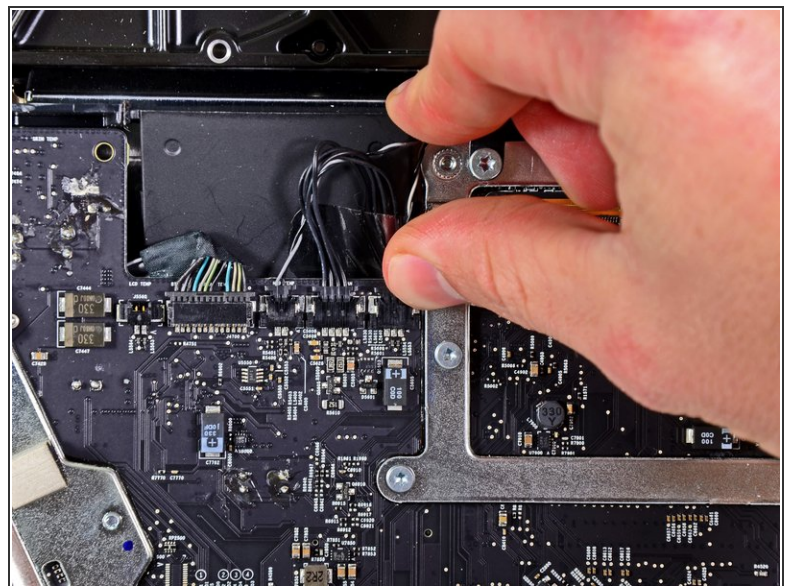
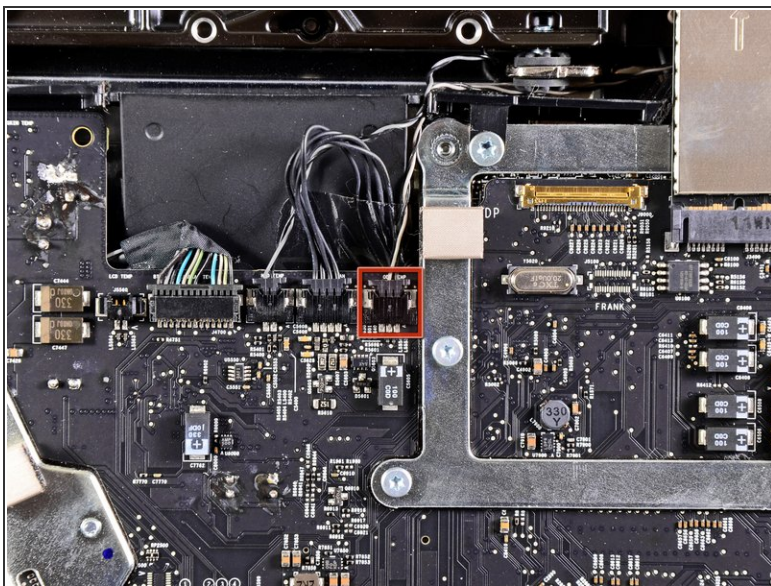


## Step 1 — Optical Drive



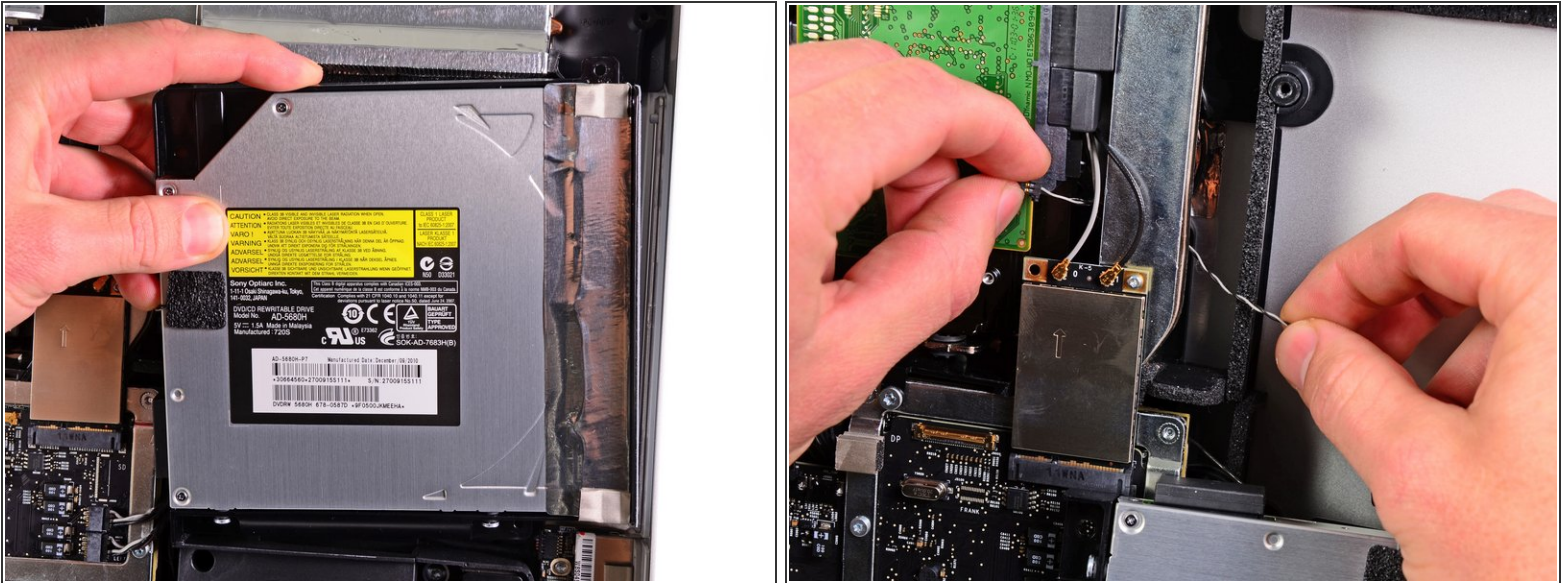
- Remove the following four screws:
  - One 9.3 mm T10 Torx screw with a large head
  - Three 9.3 mm T10 Torx screws with a normal sized head

## Step 2



- Pull the optical drive thermal sensor connector toward the top edge of the iMac to disconnect it from its socket on the logic board.

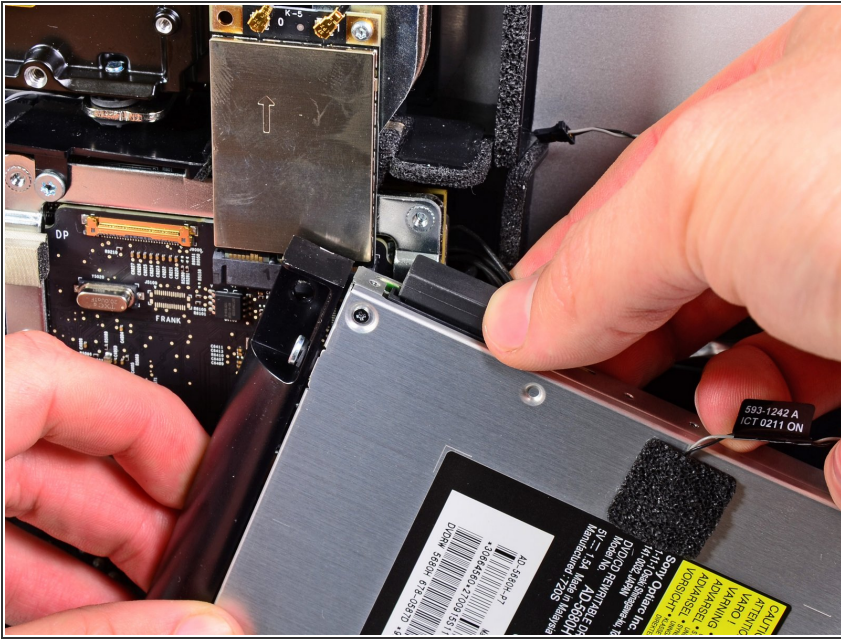
## Step 3



- Lift the inner edge of the optical drive and maneuver its connector past the GPU frame attached to the logic board.
- Carefully pull the optical drive off its mounting pins on the right side of the outer case to gain clearance for disconnecting the optical drive cable.
- Allow the optical drive to hang down as you de-route the optical drive thermal sensor connector from behind the GPU heat sink.



## Step 4



- Disconnect the optical drive cable by pulling its connector away from the optical drive.
- Remove the optical drive from the iMac.
- Do not forget to also move the thermal sensor from the optical drive to the enclosure when you install the second hard drive.

To reassemble your device, follow these instructions in reverse order.